



The Door to Quality.

2240-41 / 4240-41

RAISED PANEL PAN DOOR

www.chiohd.com

C.H.I. OVERHEAD DOORS

These models available in



Models 2240/41 are also available in



Pictured. 18' x 8' 2241 white with optional stockton window inserts



8' x 7' 4240 white with optional mission window inserts

MODEL 2240	Short Panel, Uninsulated
MODEL 2241	Short Panel, Insulated
MODEL 4240	Long Panel, Uninsulated
MODEL 4241	Long Panel, Insulated

- Door sections are formed from heavy, 24-gauge galvanized draw quality steel
- Section joints are roll-formed into a tongue-and-groove design which produces a superior weather seal
- Bottom weather seal utilizes an aluminum retainer and extruded virgin vinyl
- Long-lasting rollers assure consistent, quiet and efficient operation
- Inside stiles are made of galvanized steel and stile holes are "dimpled" for increased holding power
- Extension or torsion springs are coated and individually computer-calibrated to lift your door
- Extra heavy paint system¹ in your choice of white, almond, sandstone, brown, or evergreen
- Hinges are stamped from galvanized steel in a "wide body" pattern for greater stability and longer life
- Optional automatic latching lock system opens easily from inside or outside
- **Models 2241/4241** include 1-3/8" CFC⁴ free polystyrene insulation with a vinyl back cover
- **Models 2241/4241** R-value: 7.94

For additional information, please see numbered end-notes on backside.

For a traditional-looking, heavy-duty steel door, the 2240/41 and 4240/41 models are truly among the best around. Available in five designer colors, it is an attractive top-of-the-line door that will both compliment the looks of your home and provide dependable protection for many years. Designed to accompany a wide variety of home styles, this heavy-gauge model is fit for a long life.

BEAUTIFUL.
DEPENDABLE.

WINDOW & GLASS OPTIONS

Add a touch of elegance and complement the outside of your home with the addition of decorative and designer glass options from C.H.I. These options are an investment designed to improve the natural beauty of your exterior while adding to the value of your home.

DESIGNER LITES² & TRIMS



Plain

Tinted

Obscure



Somerset Short*



Somerset Long*



Hawthorne Short*



Hawthorne Long*

*Hawthorne and Somerset glass is available in both Brass and Platinum coming.

C.H.I. OVERHEAD DOORS
WINDBREAKER
SERIES



Wind can be unpredictable and destructive. This is why C.H.I. Windbreaker Series and iSeries doors are designed, tested, and built to the most rugged specifications. Wind chamber tested to ensure wind-load resistance, these extra-sturdy designs provide enhanced defense against the elements.

C.H.I. Overhead Doors developed the resilient Windbreaker Series garage doors to protect against high wind conditions. The super-resilient C.H.I. iSeries Impact Approved doors have strength designed to withstand direct collision of projectiles and other windborne debris at high speeds.

Standard Window Design Trims SHORT PANEL



2-4 Piece Sunburst



8 Piece Sunburst



7 Piece Sunburst



6 Piece Sunburst



5 Piece Sunburst



Cathedral



Sherwood



Stockton



Cascade



Mission



Waterton

Standard Window Design Trims LONG PANEL



2-2 Piece Sunburst



4 Piece Sunburst



3 Piece Sunburst



Sherwood



Stockton



2-2 piece Arched Stockton



4 piece Arched Stockton



Madison



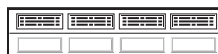
2-2 piece Arched Madison



4 piece Arched Madison



Cascade



Mission



Waterton



The Door to Quality.

COLOR SELECTIONS

WHITE

ALMOND

SANDSTONE

BROWN

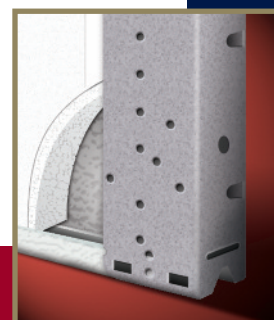
EVERGREEN

FOOTNOTES

1. Extra heavy paint system consists of .25 mil. primer with rust inhibitor and a .75 mil. coating of baked-on polyester paint.
2. All designer lights are either transparent or semi-transparent. For all available window options, please see our Glass Option Brochure, or visit your C.H.I. Overhead Doors Distributor.
3. Refer to samples at your local C.H.I. Overhead Doors Distributor for exact color match.
4. Chlorofluorocarbon (CFC) free.

VISIT YOUR DOOR PROFESSIONAL AT:

C.H.I. Overhead Doors are manufactured in Arthur, Illinois, USA.



DOOR CONSTRUCTION

These models utilize 24-gauge exterior steel skin with 1-3/8" thick CFC⁴ free polystyrene foam insulation with a vinyl back cover. Steel end and intermediate stiles are held firmly in place by a tab-loc system, creating increased strength and rigidity.

Models 2241/4241.....R-value - 7.94

All information presented is based on the specifications and features available at the time of printing and is subject to change without notice.